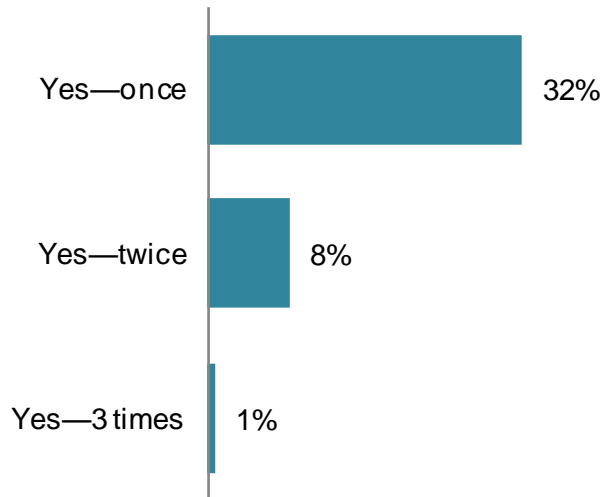


Source: Informationisbeautiful.net

New plastics are the new norm

Q. Has your financial institution sent a new debit, credit, or prepaid card to you during the past year because of a data breach or fraudulent activity? (n=306)



Source: Aite Group, ACI Worldwide survey of consumers in 20 countries, Q1 2014

The rings monetize the stolen data efficiently

ad [Mozilla](#) [Firefox](#) [Google](#) [Chrome](#) [Opera](#)

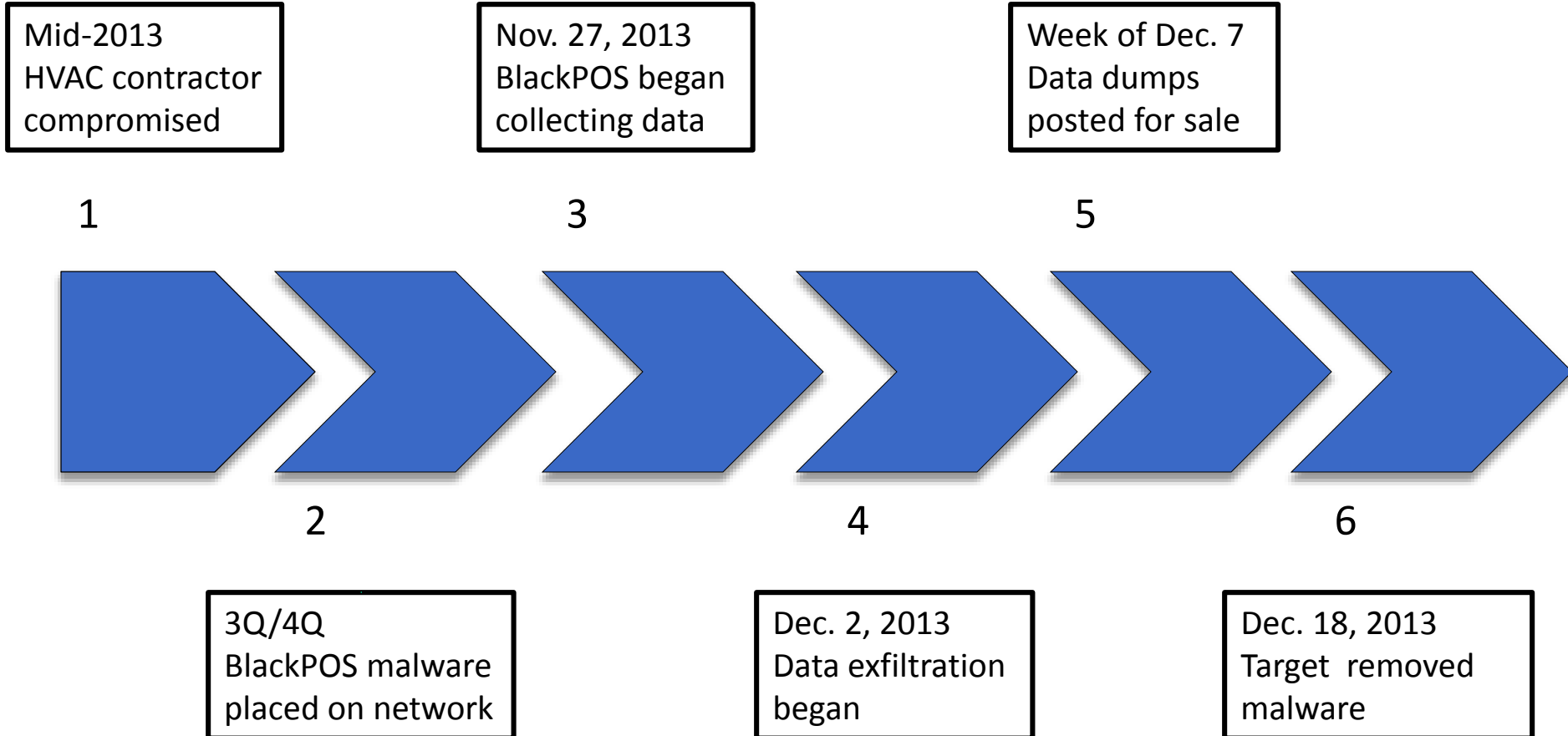
Country	Dump type	Dun
<input type="text" value=""/>	<input type="text" value="All"/>	<input type="text" value="All"/>
Bins	Bank & State & City	Base
<input type="text" value="2, 376282"/>	<input type="text" value="All"/>	<input type="text" value="All"/>
	<input type="text" value="All"/>	
	<input type="text" value="All"/>	

Find the bin you were looking for? Need more dumps of particular bin? Try our partner's shop -

[- 500k of fresh dumps](#)

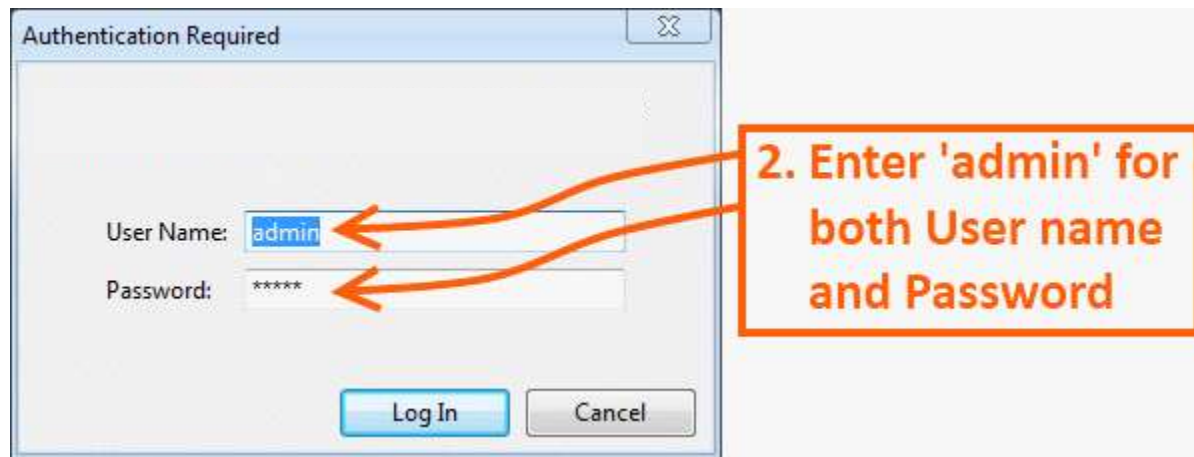
Bin	Card	Debit/Credit	Mark	Expired	Track 1	Code	Country	Bank	Base	Price	Cart
551686	MASTERCARD	DEBIT	STANDARD	11/14	Yes	101	United States, MI, GRAND RAPIDS, 49512	CHEMICAL BANK	Tortuga-6	26.6\$	<input style="width: 30px; height: 20px;" type="button" value="+"/>
414709	VISA	CREDIT	SIGNATURE	02/16	Yes	101	United States, PA, HARRISBURG, 17111	CAPITAL ONE BANK (USA) N.A. Dump or cc of this particular bank (BIN) cannot be replaced or refunded.	Tortuga-6	39.2\$	<input style="width: 30px; height: 20px;" type="button" value="+"/>
512107	MASTERCARD	CREDIT	GOLD	02/16	Yes	101	United States, AZ, MESA, 85206	CITIBANK N.A. Dump or cc of this particular bank (BIN) cannot be replaced or refunded.	Tortuga-6	44.8\$	<input style="width: 30px; height: 20px;" type="button" value="+"/>

Attacks range from sophisticated...



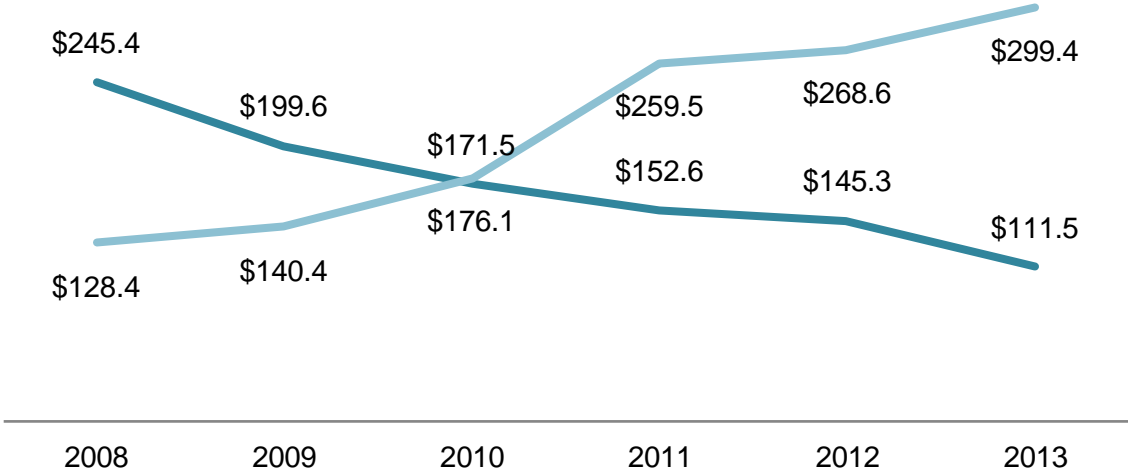
...to very basic

- 28% of breaches result from weak passwords
- Another 28% of breaches result from weak remote access security (Trustwave)



Chip cards: Highly effective at bringing down counterfeit fraud

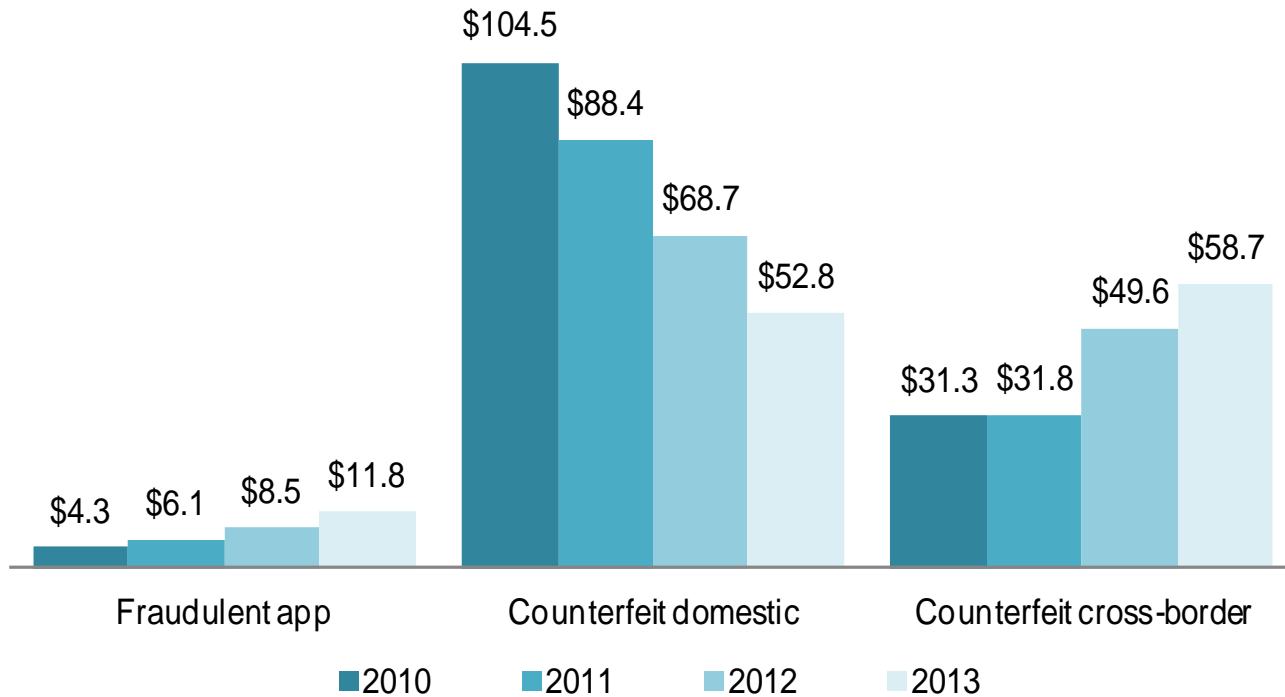
Changes in Canadian Credit Card Fraud Losses, 2008 to 2013 (In millions of CAD)



Source: Canadian Bankers Association

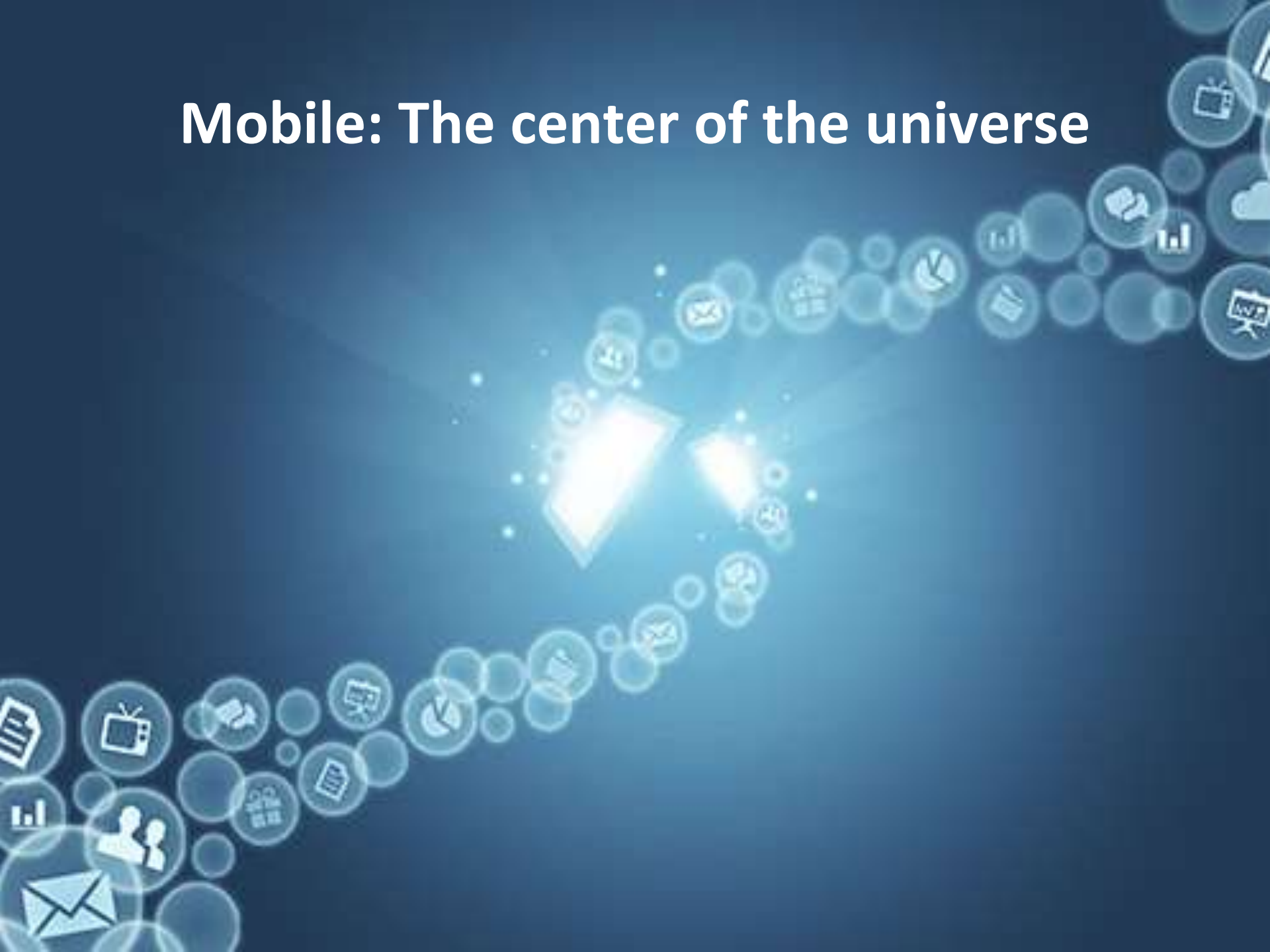
Fraudsters will shift tactics

Change in Canadian Credit Card Fraud Losses, 2010 to 2013 (In CA\$ millions)



Source: Canadian Bankers Association

Mobile: The center of the universe



Aite Group: Partner, Advisor, Catalyst

Aite Group (pronounced eye-tay) is an independent research and advisory firm focused on business, technology and regulatory issues and their impact on the financial services industry.

Julie Conroy

Research Director

jconroy@aitegroup.com

+1.617.398.5045